



# Strategic Plan Initiative

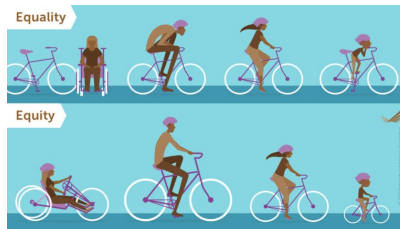
**EQUITABLE ACCESS — C.1.a:** Identify and remove barriers to authentic learning and high expectations for our diverse learners.



**SUMMARY** — By ensuring access to standards-aligned adopted curriculum and differentiated core instruction for each student, this initiative links to the Equitable Access theme of the strategic plan, which supports the six priority student outcomes.

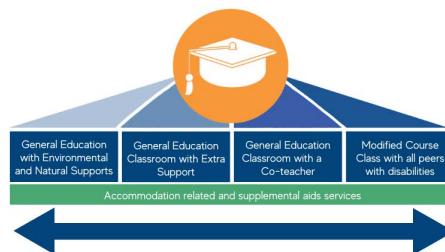
## COMPLETED:

- ✓ Use root cause analysis to identify barriers
- ✓ Provide Professional Development for co-teaching
- ✓ Provide same district resources for all students



## RESOURCES:

- Continuum of Services [image](#)
- Sound enhancement [video](#)
- Standard classroom technology [images](#)
- Strategic Plan link



## STUDENT IMPACT:

- More time receiving grade level standards based instruction
- Increase sense of belonging
- Increased student engagement
- Allowing students more choices at graduation

## TEACHER IMPACT:

- Students will be more engaged in their learning, making classroom management easier
- With co-teaching, working along side colleagues
- Students will have more success creating an opportunity for teachers to have greater job satisfaction

## QUESTIONS? PLEASE CONTACT:

Kelley Clevenger, 425-385-5250, [kclevenger@everettsd.org](mailto:kclevenger@everettsd.org)